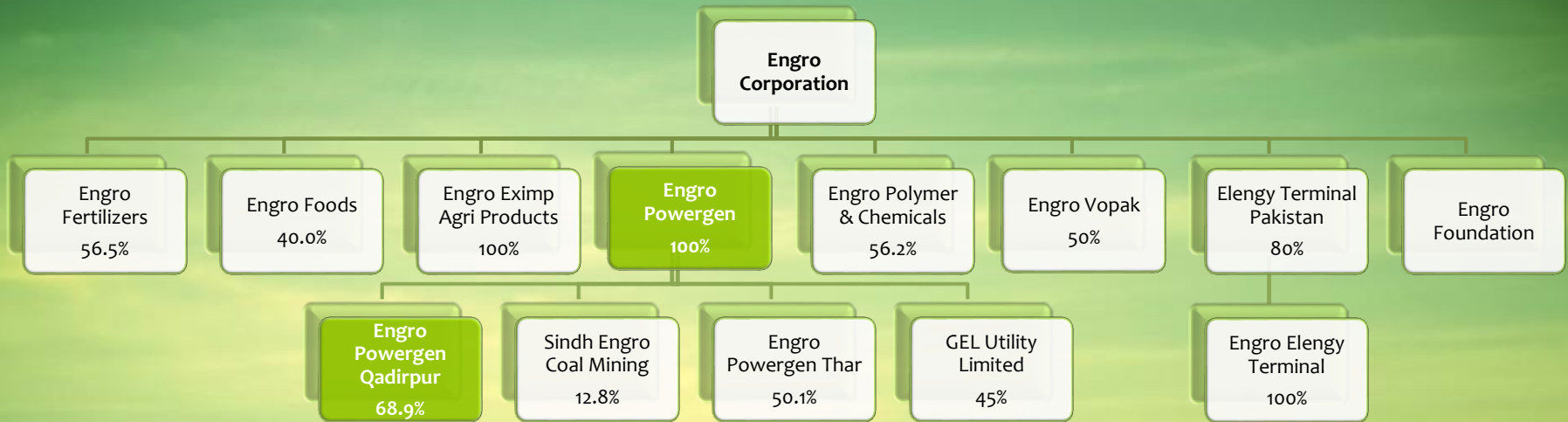


Engro Powergen Qadirpur Limited
Analyst Briefing Q1 2017
April 21, 2017



Engro Corporation Portfolio



Key Highlights for Q1 2017

EPQL achieved PAT of PKR 669 M for Q1 2017 vs PKR 459 M in Q1 2016

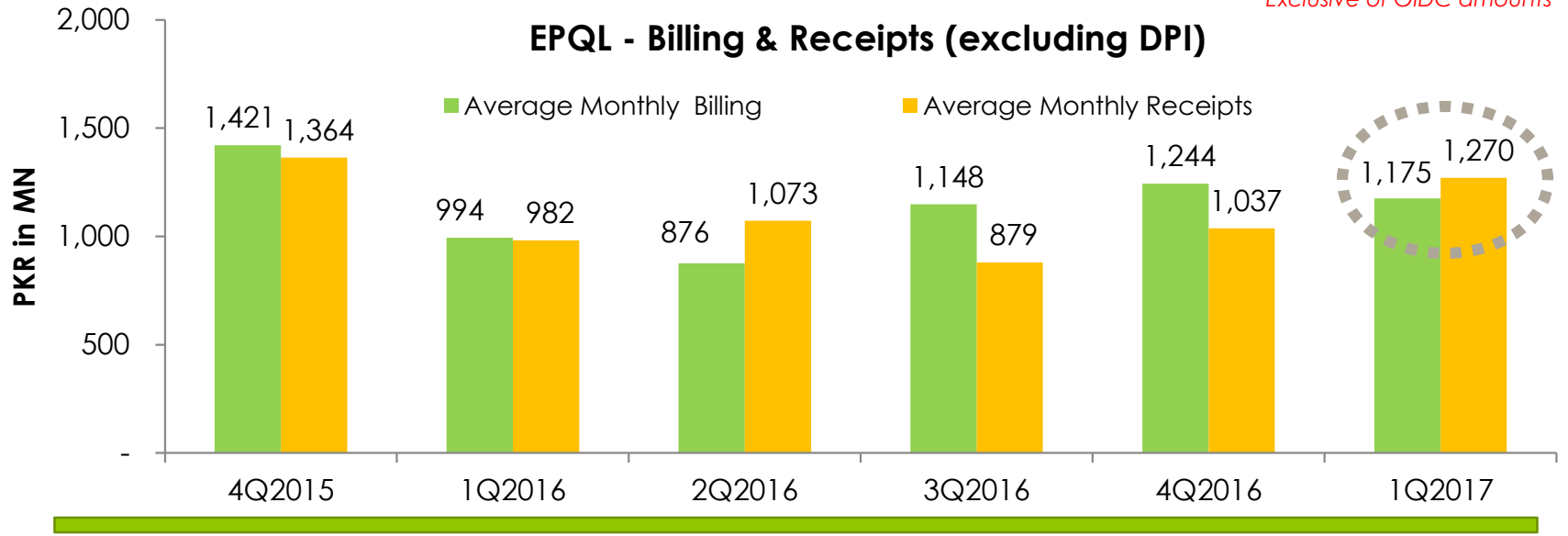
Management negotiated 110 M from insurance against the damages due to Guddu Transformer Failure

Plant demonstrated a Billable Capacity Factor of 100.6% in Q1 2017 vs 99.9% last year

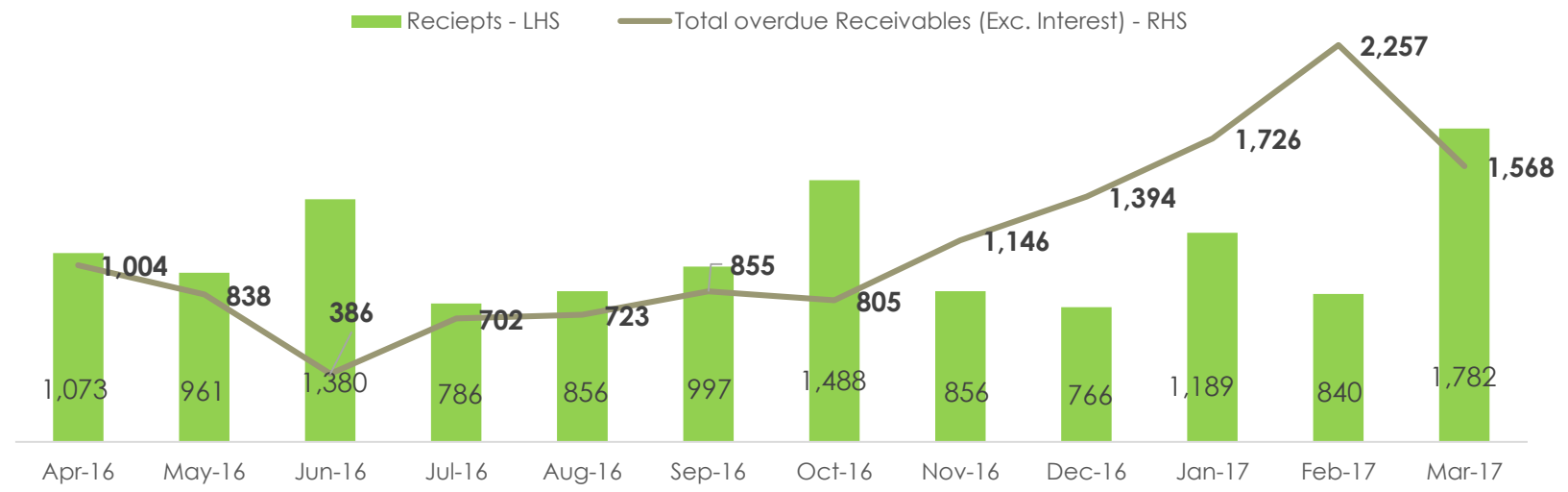
Plant Load Factor was 98.3% in Q1 2017 vs 21.1% (Lower Load Factor in Q1 2016 was due to Guddu Transformer failure at NTDC end)

Overall Liquidity remained under control

*Exclusive of GIDC amounts

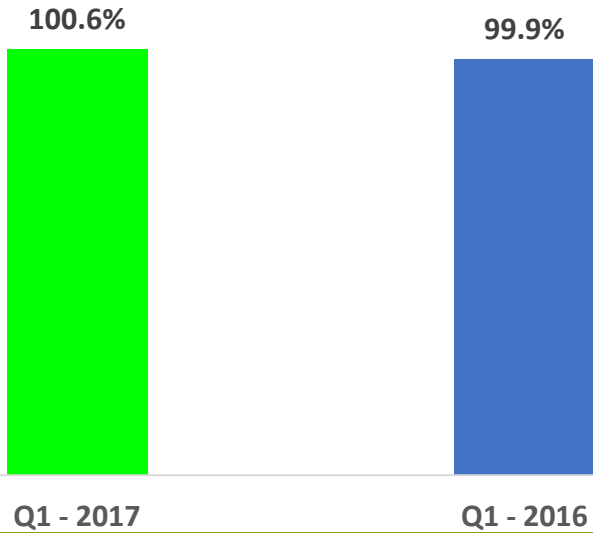


PEPCO Receivables (in PKR Mn)

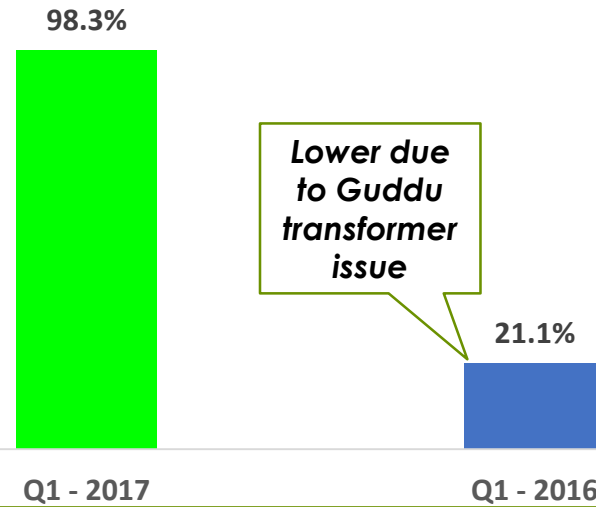




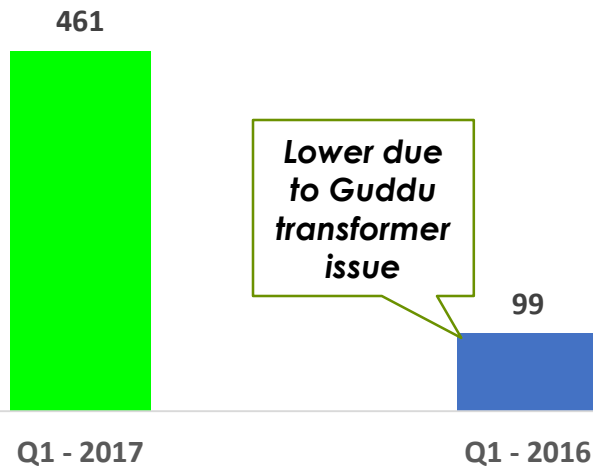
Billable Availability Factor



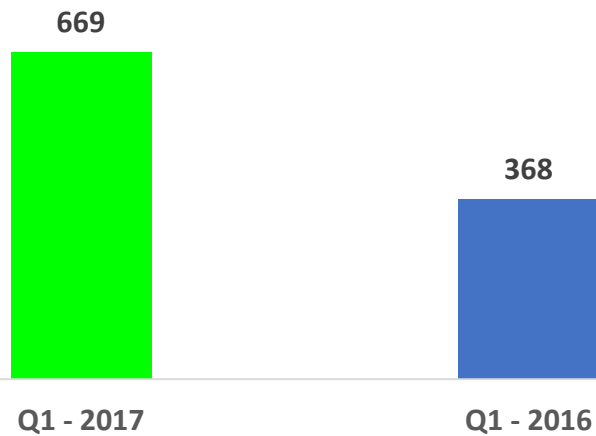
Load Factor



Net Electrical Output (Gw)

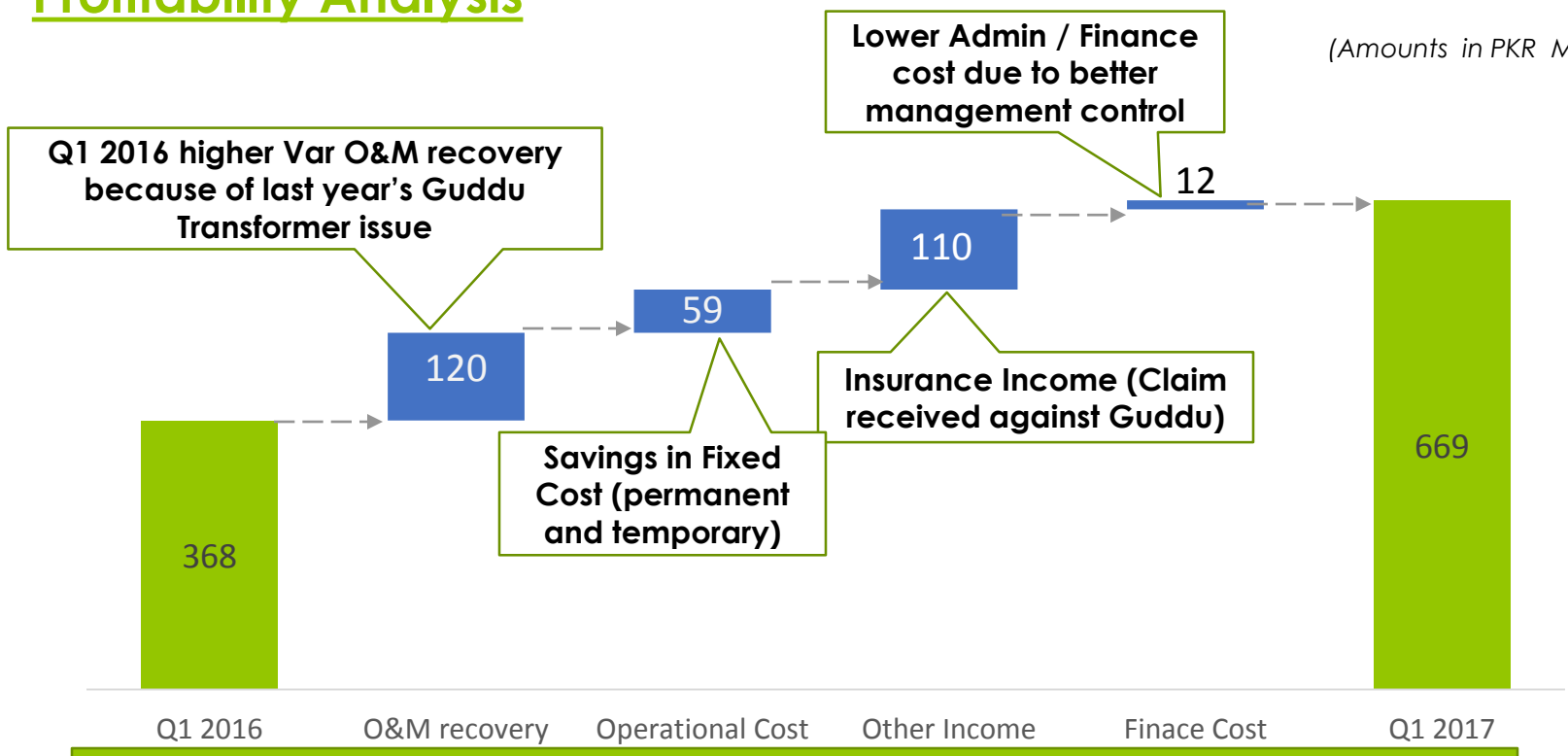


PAT (Pkr Mn)

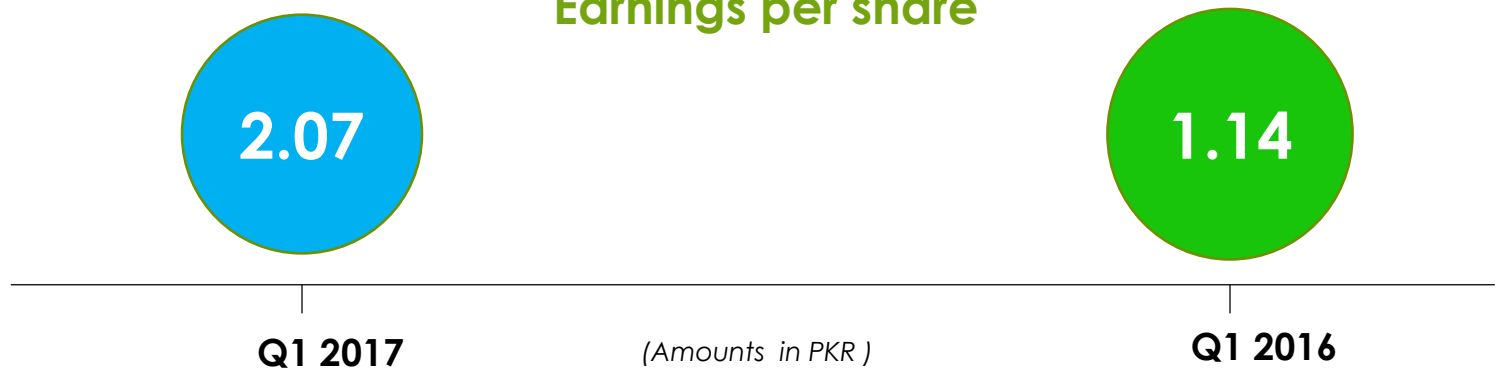


Profitability Analysis

(Amounts in PKR Mn)



Earnings per share





Thank you.

Any Questions?